

J. Front Retailing Co., Ltd.

Corporate Profile

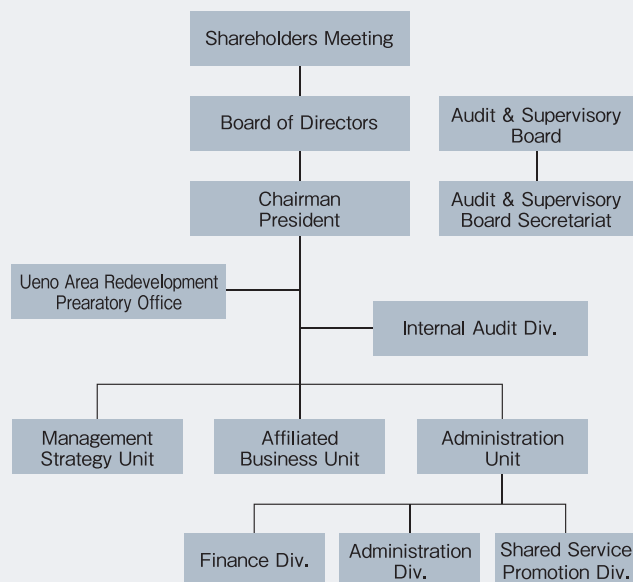
Company name : J. FRONT RETAILING Co., Ltd.
 Main store : 10-1, Ginza 6-chome, Chuo-ku, Tokyo
 Office : 1-1, Yaesu 2-chome, Chuo-ku, Tokyo
 Established : September 3, 2007
 Capital : ¥30,000 million
 Line of business : Department store operation; retail; restaurants; wholesale; import and export; design, supervision and contracting of construction works; direct marketing; credit cards; labor dispatch service; merchandise inspection and consulting; and others
 Number of employees : 7,190 (As of February 28, 2015) (Consolidated)
 URL : <http://www.j-front-retailing.com/>

Management

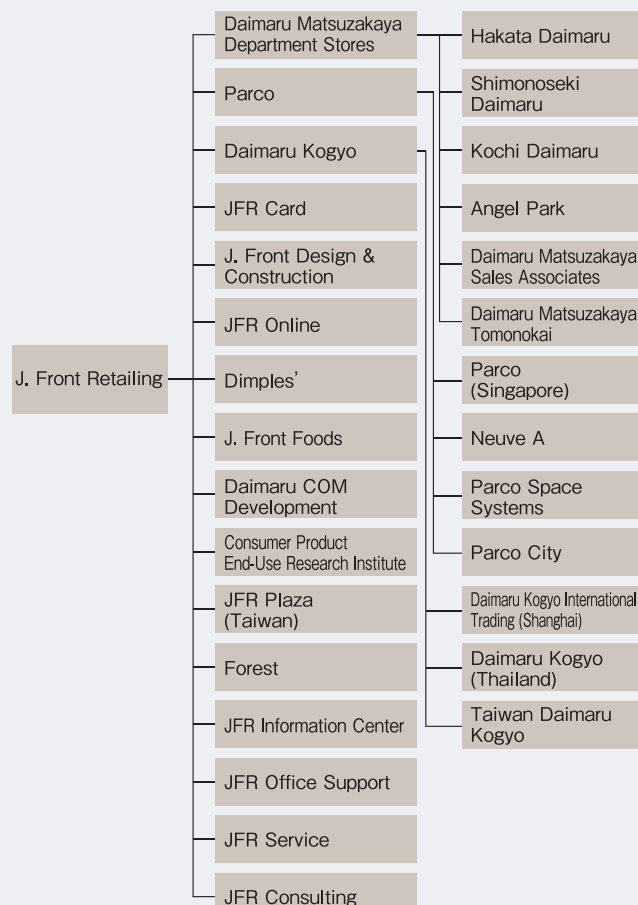
Chairman	SAMURA Shunichi	
President	YAMAMOTO Ryoichi	
Director	YOSHIMOTO Tatsuya	President of Daimaru Matsuzakaya Department Stores Co. Ltd. President of Daimaru Matsuzakaya Sales Associates Co. Ltd.
Director	MAKIYAMA Kozo	Director, President and Representative Executive Officer of Parco Co., Ltd.
Director and Senior Managing Executive Officer	KOBAYASHI Yasuyuki	Senior Executive General Manager of Affiliated Business Unit
Director and Managing Executive Officer	FUJINO Haruyoshi	Senior Executive General Manager of Management Strategy Unit
Director and Managing Executive Officer	DOI Zenichi	Senior Executive General Manager of Administration Unit Compliance and Risk Management
Director	TACHIBANA FUKUSHIMA Sakie	
Director	OTA Yoshikatsu	
Audit & Supervisory Board Member	OCHI Bunshiro	
Audit & Supervisory Board Member	KATO Yoichi	
Audit & Supervisory Board Member	TSURUTA Rokuro	
Audit & Supervisory Board Member	ISHII Yasuo	
Audit & Supervisory Board Member	NISHIKAWA Koichiro	
Executive Officer	IMAZU Takahiro	Senior General Manager of Management Planning, Management Strategy Unit
Executive Officer	ENOMOTO Tomohiko	Senior General Manager of Group ICT Strategy Promotion, Management Strategy Unit
Executive Officer	TADATSU Takehiko	Group Organization and Personnel Policy, Management Strategy Unit
Executive Officer	KUBOI Satori	Senior General Manager of Affiliated Business, Affiliated Business Unit
Executive Officer	TSUTSUMI Hiroyuki	Senior General Manager of Finance Division

Notes: 1. Tachibana Fukushima Sakie and Ota Yoshikatsu are Outside Directors.
 2. Tsuruta Rokuro, Ishii Yasuo and Nishikawa Koichiro are Outside Audit & Supervisory Board Members.

Organization Chart of J. Front Retailing Co., Ltd.



Organization Chart of J. Front Retailing Group



(As of May 31, 2015)

Daimaru Matsuzakaya Department Stores Co. Ltd.

Corporate Profile

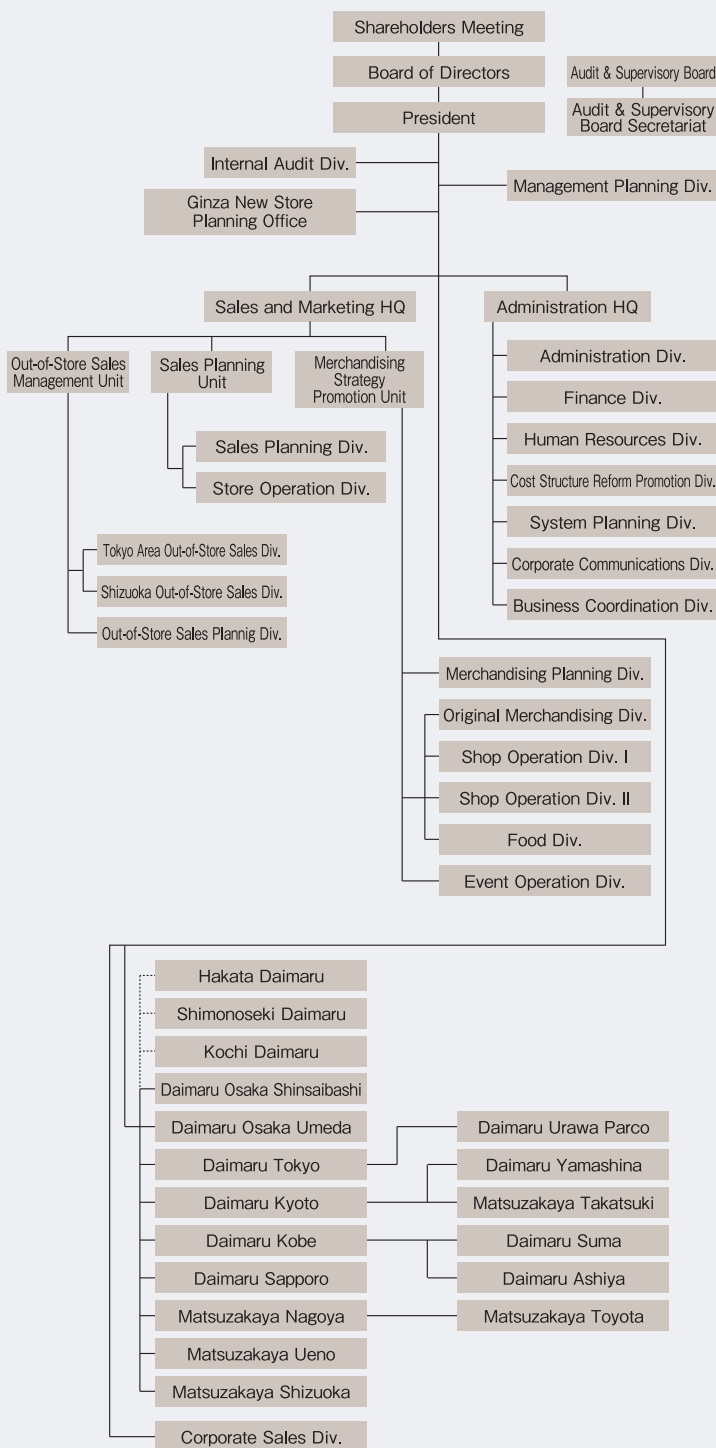
Company name	: Daimaru Matsuzakaya Department Stores Co. Ltd.
Head office	: 18-11, Kiba 2-chome, Koto-ku, Tokyo
Renamed	: March 1, 2010
Capital	: ¥10,000 million
Line of business	: Department store operation
Major shareholder and shareholding ratio	: J. Front Retailing Co., Ltd. 100%
U R L	: http://www.daimaru-matsuzakaya.com/

Management

President	YOSHIMOTO Tatsuya	Director of J. Front Retailing Co., Ltd. President of Daimaru Matsuzakaya Sales Associates Co. Ltd.
Director and Managing Executive Officer	MURATA Soichi	Senior Executive General Manager of Sales and Marketing Headquarters Executive General Manager of Merchandising Strategy Promotion Unit
Director and Executive Officer	MATSUDA Hirokazu	Senior Executive General Manager of Administration Headquarters Compliance and Risk Management
Director and Executive Officer	IMURA Ario	Executive General Manager of Sales Planning Unit and Out-of-Store Sales Management Unit
Audit & Supervisory Board Member	OCHI Bunshiro	
Audit & Supervisory Board Member	KATO Yoichi	
Audit & Supervisory Board Member	ISHII Yasuo	
Audit & Supervisory Board Member	NISHIKAWA Koichiro	
Managing Executive Officer	HARADA Takaharu	Chairman of Daimaru Matsuzakaya Department Stores (Shanghai) Consulting Co., Ltd.
Managing Executive Officer	YUNOKI Kazuyo	President of The Hakata Daimaru, Inc.
Executive Officer	HIGUCHI Masaichi	Senior General Manager of Original Merchandising Division
Executive Officer	IKEDA Hideyuki	Senior General Manager of Shop Operation Division I Department Store Omnichannel Retailing Promotion
Executive Officer	YOSHIKAWA Tatsuji	Senior General Manager of Shop Operation Division II Inbound Business Promotion
Executive Officer	OYAKE Yoshihiro	Senior General Manager of Food Division
Executive Officer	TADATSU Takehiko	Senior General Manager of Human Resources Division
Executive Officer	SAWADA Taro	Executive Store Manager of Daimaru Osaka Shinsaibashi
Executive Officer	FUJI Hiroko	Executive Store Manager of Daimaru Osaka Umeda
Executive Officer	NISHISAKA Yoshiharu	Executive Store Manager of Daimaru Tokyo
Executive Officer	OTA Yukio	Executive Store Manager of Daimaru Kobe
Executive Officer	KAGAWA Akiko	Executive Store Manager of Daimaru Sapporo
Executive Officer	KATO Toshiki	Executive Store Manager of Matsuzakaya Nagoya
Executive Officer	ISHINO Manabu	Senior General Manager of Corporate Sales Division

Note: Ishii Yasuo and Nishikawa Koichiro are Outside Audit & Supervisory Board Members.

Organization chart of Daimaru Matsuzakaya Department Stores



(As of May 31, 2015)